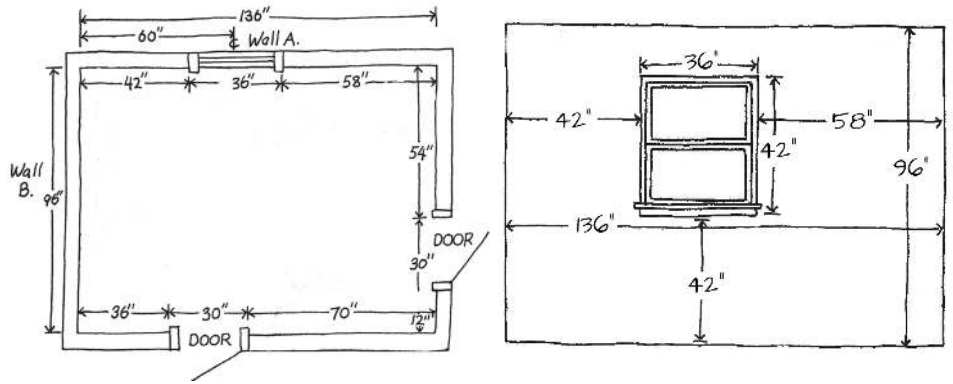


KITCHEN MEASURING GUIDE - DRAW YOUR EXISTING KITCHEN

Rest assured, we will confirm all measurements prior to ordering!

How To Measure:

- 1 Notate, in inches, the measurements of any walls, doors, and windows (including trim).
- 2 Measure the ceiling height from the floor.
- 3 Make notes of any obstructions or wall changes, including: soffits, jogs, beams, posts, etc.



Ceiling Height: _____ inches **Soffit (inches):** _____ width _____ height _____ depth

Customer Name: _____ Email: _____

APPLIANCE INFORMATION & MEASUREMENTS

We highly recommend picking out appliances prior to purchasing your cabinets, to ensure a proper fit.

	Brand (Whirlpool, LG, etc)	Model #	Dimensions (W"xH"xD")
Refrigerator			
Oven/Range			
Cooktop			
Exhaust Hood			
Wall Oven			
Microwave			
Dishwasher			
Sink			
Wine Fridge			

Notes: _____

Important Terms To Know:



Soffit: The space between cabinets and the ceiling. Appears to be a lowered ceiling, covered with drywall, usually used to hide piping, wires, HVAC, and other mechanical items. Depending on what is behind may make it costly to remove. Please be sure to notate the location & dimensions if you have one in your kitchen drawing.



Wall Jog: An area that protrudes from the rest of the wall, could be used to hide a pipe or other mechanical elements. If you have a jog in your wall, note the length and the depth for design purposes.



**After Measuring, Snap
Some Photos!**

The more photos you have, the better!



Helps your
kitchen designer
understand your
layout.



Snap a photo
of any unique
areas or points
of concern.